

# LECTRODRYER

ADSORPTION TECHNOLOGY EXPERTS



## GENERATOR AUXILIARY SKID



# GENERATOR AUXILIARY SKID

The Lectrodryer Generator Auxiliary Skid is used for maintaining and monitoring the generator gas. The Gen Aux unit can include a combination of components specially designed to meet your specific hydrogen generator maintenance needs.

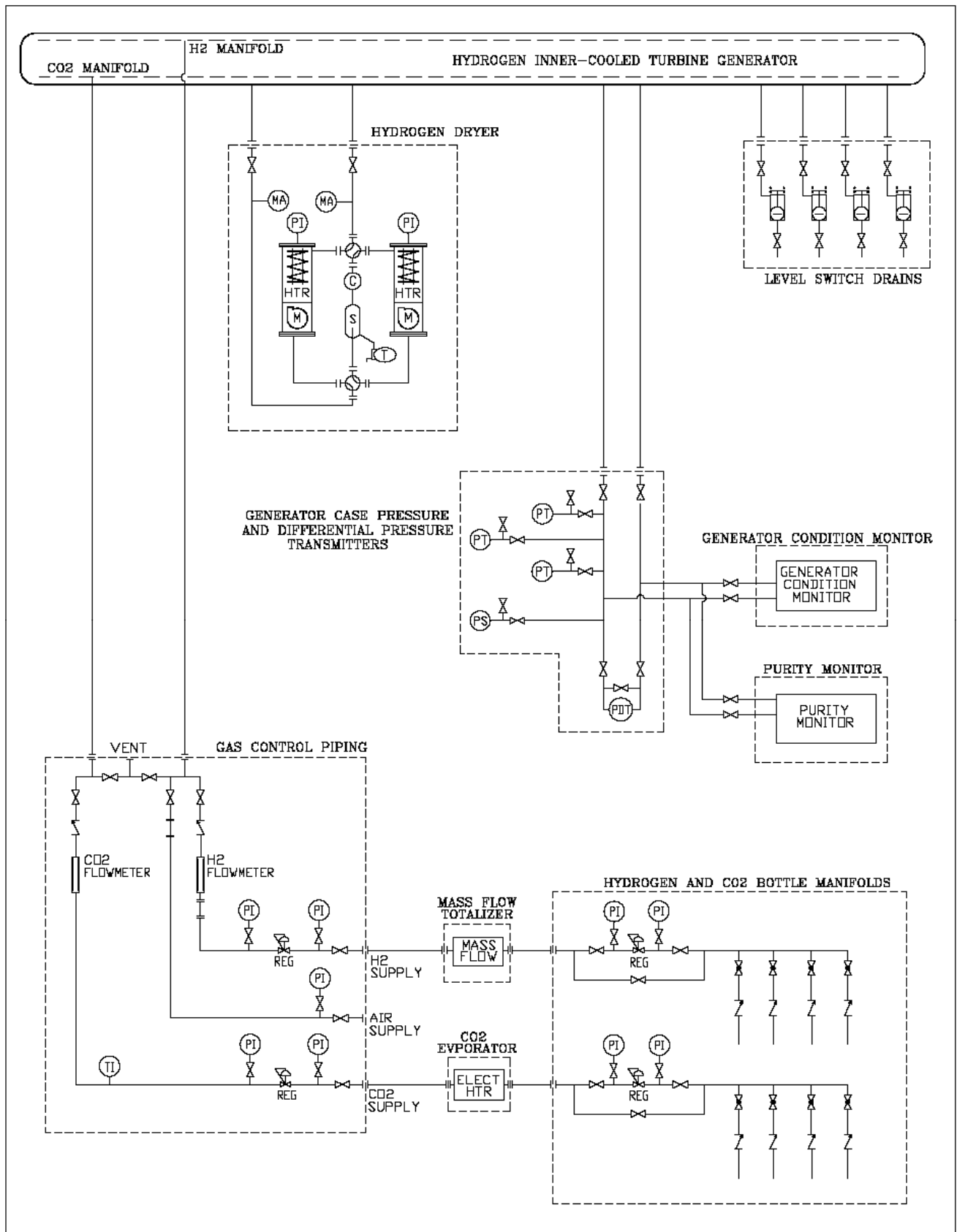
**The Gen-Aux Skid consists of the following components:**

- **The Lectrodryer BAC-50 hydrogen dryer:** The BAC-50 is the primary component of the GEN AUX system. It is a fully automatic dual tower unit utilizing regenerative type desiccant for the continuous drying of hydrogen gas. It is designed to operate from seven standard voltages, with no purge, and no operator involvement. The system can be equipped with inlet and outlet hygrometers that monitor the hydrogen dewpoint, water discharge monitoring system, and a diagnostic package that includes switch failure and motor failure alarms with contacts.
- **Generator Gas Purity Monitoring System:** This system provides purity information of the generator gases including hydrogen, carbon dioxide and air or mixtures thereof. This feature provides real time purity reading of the generator conditions facilitating purging, reducing purge gases, saving time with the safest operation.



- **Gas Control Piping/Purge Control:** Generator purging demands an accurate operation to ensure appropriate generator drain and fill. This piping system facilitates gas handling and ensures that only one type of gas is being supplied to the generator.
- **Continuous Generator Monitoring:** Provides continuous monitoring of generator conditions by providing Generator Case Pressure and Fan Differential Pressure.
- **Liquid Level Detectors:** These level switches are provided in different points of the generator to avoid damage from condensation or leakages that may occur. It is an additional protection for the generator.
- **DCS Communication:** All operations associated with this skid including dryer, purity level detectors, generator monitoring, as well as purging operations can be communicated to a control room for inclusion into the plant DCS.
- **Additional Options that can be provided include:**
  - Condition Monitor
  - Bottle Racks
  - CO2 Evaporator





# LECTRODRYER HAS THE SOLUTION FOR ALL COMPRESSED AIR AND GAS DRYING PROBLEMS

**Lectrodryer offers a complete range of drying and purification equipment:**  
**For atmospheric or high pressure conditions**  
**For very small or very large air volumes**  
**For air, gases, and certain organic fluids**

## Regenerative Adsorption Dryer

### Typical applications:

Drying compressed air for instruments; purging of refrigeration coils, compressors, and systems; drying air for ozone generators; vacuum-breaking operations controlled atmosphere gas



### Features:

Carbon steel pressure vessels with ASME Code (where applicable) for up to 150 PSIG Stainless steel perforated metal desiccant support and inlet flow diffuser, sheathed or non sheathed heating element in which each adsorber vessel with thermostatic over temperature protection in the heater bundle, two 4-way lubricated plug valves with air piston operator and solenoid valve controls, thermal pressure relief valves, pressure gages, dial thermometer in the purge outlet, 110 volt controls and NEMA 1 electrical enclosures.

### Optional Features:

Special controls and electrical enclosures.

## Refrigeration-Type Industrial Gas Dryer

### Typical Application:

Low pressure situations for controlling atmospheric gases.



### Features:

Power-on light, high temperature warning light, on/off switch, refrigeration analyzer gage, gas-out gage, gas-in temperature gage, low suction pressure cut-out, high head pressure cut-out, hot gas bypass capacity control, start push button pump down shut off cycle, oil pressure control, and suction accumulator.

### Optional Features:

Special control and electrical enclosures.

## Lectrodryer Filters

The Lectrodryer type SF and type F filters provide high efficiency filtration with ten sizes available in each type for flows to 8400 SCFM, larger sizes available on application. Both types have a high level filter efficiency of 99.985% retention (0.015 DOP penetration) for filtration to a 0.3 micron



## Lube Oil / Air Tanks

Lectrobreather tank vent dryers prevent atmospheric moisture from entering storage during "breathing" due to ambient temperature changes and draining periods. Valuable oils and chemical solutions remain free of water contamination.



CRN



IECEX

ASME

SQL



CONTINUING THE TRADITION OF QUALITY AND SERVICE SINCE 1932

# LECTRODRYER

P.O. Box 2500, Richmond, KY 40476-2602 U.S.A.  
Phone: (859) 624-2091 Fax: (859) 623-2436  
Website: [www.lectrodryer.com](http://www.lectrodryer.com) E-mail: [info@lectrodryer.com](mailto:info@lectrodryer.com)